

Product Description

Optica™ MDV & WDS

Optica MDV Flexible LED Magnifier with Optimal Colour

Optica WDS Flexible Woods Light Magnifier with Optimal Colour for dermatology and veterinary use.



Product Images



Optica MDV



Optica WDS

Ceiling mounted



Wall Mount



Desk mount



Mobile Base



Product Features

Large Magnification

The large magnifier diameter of 157mm combined with 1.9x (3.5dpt) magnification allows the user to focus on fine details through a large-scale view.

Optimal Colour Rendering Properties

6,500°K LEDs ensure less shadow formation and optimal colour rendering.

Precise Colour Display

The exceptional Ra of >93 accurately displays the high quality of white light and the R9 value >90 describes how accurately the user can differentiate between red tissues. CRI Ra >93 . R9 >90 . R13 >95

Flexible Positioning

Reinforced friction joints and a spring balanced arm allows a broad reach of up to 142cm without the lamp head drifting. This allows smooth handling for users to examine typically harder to reach places with ease.

Woods Light

Accurate Diagnosis

The Woods light uses UV to pick up on skin conditions that may be missed using a standard LED light.

Visible Results

Other Woods lights require the room to be completely darkened to use, yet due to powerful BLB LEDs within the WDS light, it can function without this.

Approved Medical Device

Optica is an approved medical device, which means that it can be used for a wide range of applications, including:

- Dermatology
- Human medicine
- Dentistry
- Veterinary medicine
- Monitoring sterilized products

Recommended for Skin Disease Diagnosis

Optica WDS can be used to diagnose a wide range of conditions such as;

- Favus
- Types of intertrigo
- Erythrasma

Images are representative of example system only - Mount styles vary depending on model

Please refer to drawing layout for model appearance information

Please contact one of our Sales Team to discuss your requirements further



Model Number MDV	Description
OPTICAMDVT1C	Optica Medical Magnifier Ceiling Mounted Examination Lamp
OPTICAMDVD	Optica Medical Magnifier Desk Mounted Examination Lamp
OPTICAMDVW	Optica Medical Magnifier Wall Mounted Examination Lamp
OPTICAMDVM	Optica Medical Magnifier Mobile Mounted Examination Lamp

Model Number WDS	Description
OPTICAWDST1C	Optica Woods Medical Magnifier Ceiling Mounted Examination Lamp
OPTICAWDSD	Optica Woods Medical Magnifier Desk Mounted Examination Lamp
OPTICAWDSM	Optica Woods Medical Magnifier Mobile Mounted Examination Lamp
OPTICAWDSW	Optica Woods Medical Magnifier Wall Mounted Examination Lamp

Technical & Performance Information:

Unless otherwise stated: All linear dimensions in mm, angles in degrees (±5°) and weights in kg

OPTICA MDV

General System Information	OPTICAMDVT1C	OPTICAMDVD	OPTICAMDVM	OPTICAMDVW
Mount Type	Ceiling Mount	Desk Mount	Mobile Mount	Wall Mount
Lamphead/Arm	OpticaMDVT1	OpticaMDV		
System Weight (kg)	8.2	2.5	10.1	2.2
Conformity	CE (93/42/EEC) including amendments 2007/47/EC			
Type of luminaire	Examination (luminaire for diagnosis)			
Medical Device Classification	I	I	I	I
Electrical Classification	I	I	I	I
Electrical conformity	BS EN 60601-1; BS EN 60601-2-41			
Additional Information	Permanent Electrical Connection Required	Power Lead supplied loose with UK plug		

OPTICA WDS

General System Information	OPTICAWDST1C	OPTICAWDSD	OPTICAWDSM	OPTICAWDSW
Mount Type	Ceiling Mount	Desk Mount	Mobile Mount	Wall Mount
Lamphead/Arm	OpticaWDST1	OpticaWDS		
System Weight (kg)	8.2	2.5	10.1	2.2
Conformity	CE (93/42/EEC) including amendments 2007/47/EC			
Type of luminaire	Examination (luminaire for diagnosis)			
Medical Device Classification	I	I	I	I
Electrical Classification	I	I	I	I
Electrical conformity	BS EN 60601-1; BS EN 60601-2-41			
Additional Information	Permanent Electrical Connection Required	Power Lead supplied loose with UK plug		

Mount	Ceiling Mount	Desk Mount	Mobile Mount	Wall Mount
Mount Size HxWxD (mm)	40 to 166 x Ø310	130 x 90 x 105	834 x Ø650	91 x 59 x 67
Weight of Mount (kg)	6.1	0.4	8	0.1
Fixing Type	Permanent	Semi-Permanent	Mobile	Permanent
Available Rotation Lateral about Spindle (±5°)	360	360	360	180
Interface orientation	Vertical Down	Vertical Up	Vertical Up	Vertical Up
Colour	White	Black	GREY - BLACK	RAL 7040- Telegrey4
Material	Steel	Plastic	MIXED (Steel, plastic)	Plastic
Fastener type	Ø16 mm Pin	Ø16 mm Pin	Ø16 mm Pin	Ø16 mm Pin
Additional information	Stem can be cut to length	-	-	-

See following page for Lamphead Technical Data

Images are representative of example system only - Mount styles vary depending on model

Please refer to drawing layout for model appearance information

Please contact one of our Sales Team to discuss your requirements further



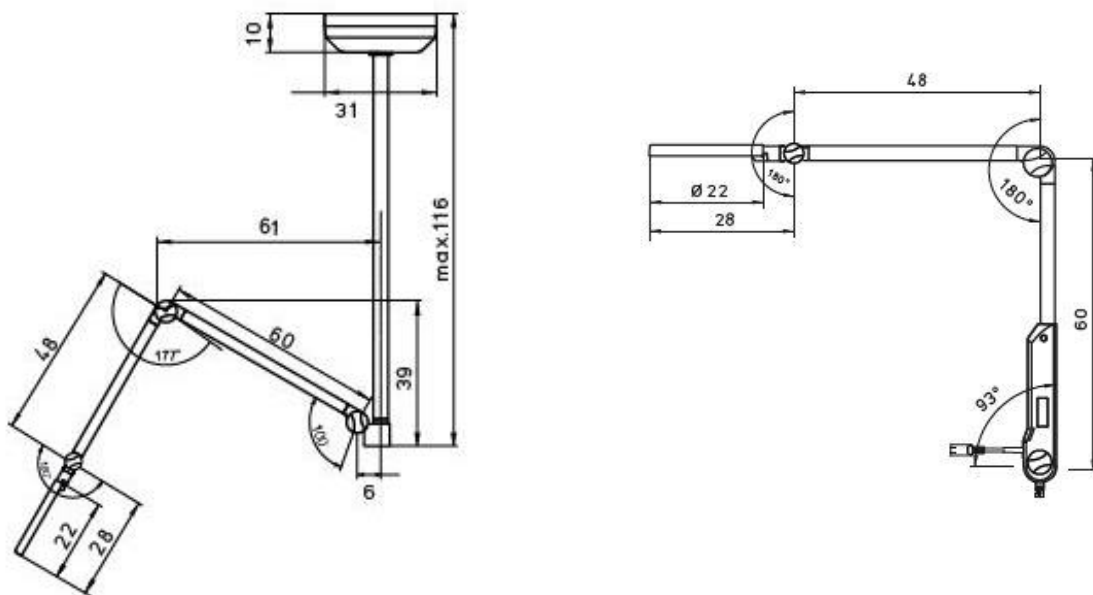
ELMFIELD ROAD | MORLEY | LEEDS | LS27 0EL | WEST YORKSHIRE | UNITED KINGDOM. T: +44 113 277 7393 / 0845 1243 666 F: +44 113 272 8844 / 0845 1243 667
 E: enquiries@brandon-medical.com W: www.brandon-medical.com
 Brandon Medical Company Limited. Registered in England & Wales No. 2827189. VAT No. GB734 591421. A subsidiary of Brandon Group Limited.

Lamphead Photometric Data	OpticaMDV	OpticaWDS
Description	LED Magnifying Examination Light with 'Daylight' white light	LED Magnifying Examination Light 'Daylight' white light and Woods light settings
Central Illuminance @ 0.15 metre (Lux max ±10%)*	6,000	6,000
Field diameter D10 @ 0.15 meter (mm)	560	560
Nominal working distance from lamphead m	0.15	0.15
Colour rendition Ra (Av R1-R8)*	>93	>93
Colour rendition R9 (red)*	>90	>90
Colour temperature (°K) *	6,500	6,500
Number & Type of lights per Lamphead	90 LED	90 LED
Additional	Continuously dimmable	Continuously dimmable
	1.9x Magnification Acrylic Lens, 3.5 Dioptres	1.9x Magnification Acrylic Lens, 3.5 Dioptres
LED life (hours)	50,000	50,000

*-10% / +20%

Lamphead/Arm General & Mechanical Data	OpticaMDVT1	OpticaMDV	OpticaWDST1	OpticaWDS
Arm Type	Articulated (Spring) for Ceiling Mounting	Articulated (Spring)	Articulated (Spring) for Ceiling Mounting	Articulated (Spring)
Light On/Off switch location	Touch Panel on Rear of Lamphead		Touch Panel on Rear of Lamphead	
Fastener type	Ø16 mm Pin		Ø16 mm Pin	
Base Joint Type and Angle (°)	Articulating 100°	Articulating 93°	Articulating 100°	Articulating 93°
Base Rotation about fastener (°)	360°	360° (max)	360°	360° (max)
Elbow Angle (°)	177°	180°	177°	180°
Arm Reach	1080		1080	
Lamphead Diameter (mm) Approx	220		220	
Lamphead Pitch (°)	180°		180°	
Lamphead Roll (°)	360°		360°	
Lamphead & Arm Weight (kg) Approx	2.1	2.1	2.1	2.1
Power Supply Lead(s) [plug]	Direct Supply	1.8m [UK]	Direct Supply	1.8m [UK]

Lamphead/Arm Electrical Data	OpticaMDVT1	OpticaMDV	OpticaWDST1	OpticaWDS
Primary Power Supply	100-240VAC 50/60 Hz		100-240VAC 50/60 Hz	
Secondary Power Supply Unit	Integral 24V DC		Integral 24V DC	
Power Consumption @ Nominal Intensity	12W		12W	
Ingress Protection Rating	IP20		IP20	



Images are representative of example system only - Mount styles vary depending on model
Please refer to drawing layout for model appearance information

Please contact one of our Sales Team to discuss your requirements further



ELMFIELD ROAD | MORLEY | LEEDS | LS27 0EL | WEST YORKSHIRE | UNITED KINGDOM. T: +44 113 277 7393 / 0845 1243 666 F: +44 113 272 8844 / 0845 1243 667
E: enquiries@brandon-medical.com W: www.brandon-medical.com
Brandon Medical Company Limited. Registered in England & Wales No. 2827189. VAT No. GB734 591421. A subsidiary of Brandon Group Limited.